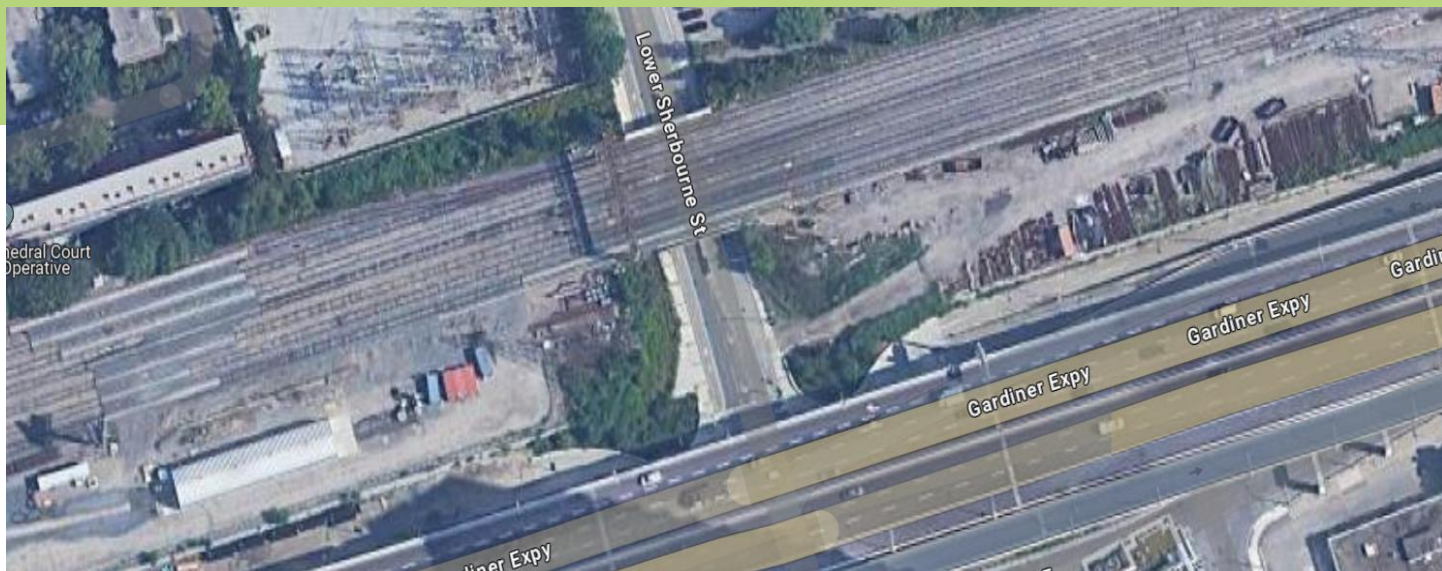


# Update: Lower Sherbourne Street Road Closure Information

March 16<sup>th</sup> to late April 2024 (timeline subject to change)



## What is happening?

Utility relocations have been underway along the rail corridor and Lower Sherbourne Street as part of the enabling work for the GO Expansion OnCorridor Works Project. In September 2023, work crews started replacing Hydro One utilities from the Sherbourne Esplanade Transformer Station to the Don Yard with a utility duct bank. The first stage of this activity included restrictions to the northbound traffic lane and required a closure for northbound traffic from the north side of the Sherbourne Street Bridge to Lakeshore Boulevard East. The second stage of the planned work on Lower Sherbourne will start March 16th, with restrictions to the southbound traffic lane, southbound cycle track, and west sidewalk north of the Sherbourne Street Bridge leading to the Esplanade Transformer Station. Southbound traffic will be diverted into the existing northbound lane.

## What does this mean for you?

The following includes a sequence of activities that will impact the area:

- Road closure changes along Lower Sherbourne Street
- Road cuts, exposure of utilities, and pavement installation
- Installation of hydro utility duct bank
- Adjacent communities will experience increased noise, traffic, and dust during this period.

**Road Closures along Lower Sherbourne are expected to take place on March 16<sup>th</sup> (timeline subject to change). The following closures will be in place:**

- Full closure of all lanes on March 16, from 1:00am to 5:00am
- Northbound traffic will continue to be restricted from March 16 to late April 2024
- Southbound traffic will be re-routed into existing northbound lane
- Restrictions to both northbound and southbound cycle tracks
- Closure of the west sidewalk

**We appreciate your ongoing patience and understanding of this necessary work. Dates subject to change.**

## **Long-Term Benefits**

The East Track Enhancements are being completed as part of the Union Station Enhancement Project and larger GO Expansion Program.

We're removing and relocating infrastructure on the south side of the Union Station Rail Corridor east of Union Station and widening the rail bridges that pass over Lower Jarvis and Lower Sherbourne Streets. The East Track Enhancements will prepare the area for two additional sections of track to be installed along the southside of the Union Station Rail Corridor, linking the Don Yard Maintenance facility to Union Station, which will increase capacity and allow for future electrification as part of the larger GO Expansion Program.

Work will take place within the rail corridor between Union Station and the Don Yard Maintenance Facility, located to the east. Work outside of the rail corridor will mostly be limited to the areas at Jarvis and Sherbourne Streets.

After the completion of the East Track Enhancements, Metrolinx will lay tracks, modernize the signalling system and electrify core segments of the GO rail network.

## **Questions**

If you have any questions or concerns about this work, please contact us any time at [TorontoEast@metrolinx.com](mailto:torontoeast@metrolinx.com) or (416) 202-3900. For more information on GO Expansion in your community, visit our website at [Metrolinx.com/GoExpansion](https://www.metrolinx.com/GoExpansion)

**Please scan the QR Code above to subscribe to our weekly e-Newsletter for updates**



### **Contact Us:**

✉ Write to us at: [torontoeast@metrolinx.com](mailto:torontoeast@metrolinx.com);

☎ By telephone (416) 202-3900

🐦 Find us on Twitter @GOExpansion

🌐 Visit the website: [www.metrolinx.com/projects-and-programs/go-expansion](https://www.metrolinx.com/projects-and-programs/go-expansion)

✉ Disponible en français sur demande. Si vous êtes intéressé, veuillez envoyer un courriel à: [torontoeast@metrolinx.com](mailto:torontoeast@metrolinx.com)