

# Proposed Stop Locations

49 BRT stop locations are proposed.

Stop locations remain at the same signalized intersections as at PIC#3.



**49** stop locations  
are proposed

**730 m** average stop  
spacing

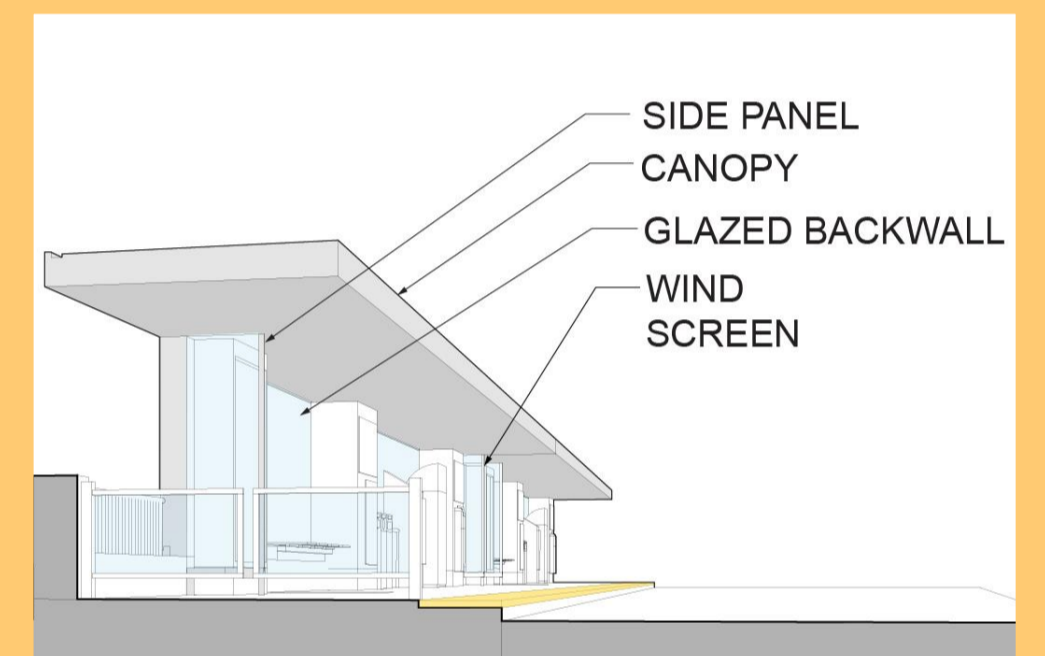


# BRT Stop Design

These renderings illustrate what the BRT shelters and platforms could look like. Two different concepts are proposed:

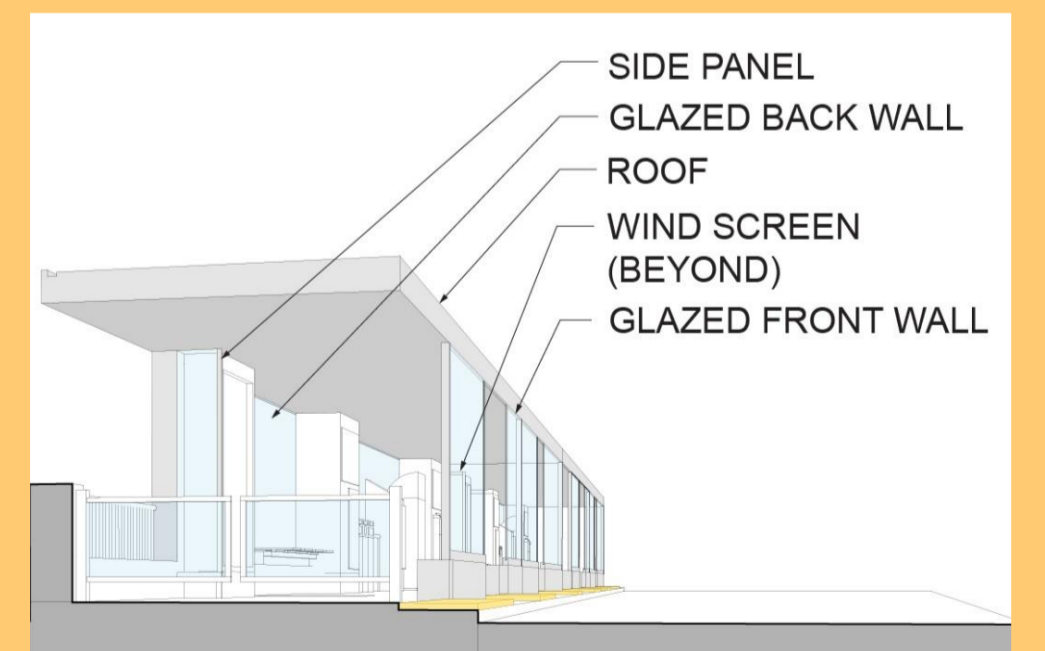
### Toronto:

Open concept shelters, with wind screens for weather protection.



### Durham Region:

Enclosed, pass-through shelters, with openings that align with bus doors.



# BRT Stop Design

The following elements will be consistent among all shelters along the corridor:

- Platform width (3.6 or 4.2 m, context sensitive)
- Width of sheltered area
- Access ramp and railings
- Tactile strips
- Location of stop name signage



Rendering of Markham Road stop in Toronto.

Certain parts of a shelter can be customized, including:

- Materials, colours and finishes of the platform surface and/or wall panels
- Art, maps, and cultural heritage elements
- Placement and amount of benches and seating
- Number of glazed panels. For curbside platforms, some panels can be removed so the platform can be accessed at multiple locations
- Curbside platforms can be narrower or integrated with sidewalk
- Level-boarding is being considered for the system.